

## ELISAPro Validation: *Anaplasma* Antibody Test Kit, cELISA v2

Each assay undergoes the following series of tests:

### Timing:

Confirms testing is completed according to assay circular, timing based per sample with a well-to-well precision of <15 seconds.

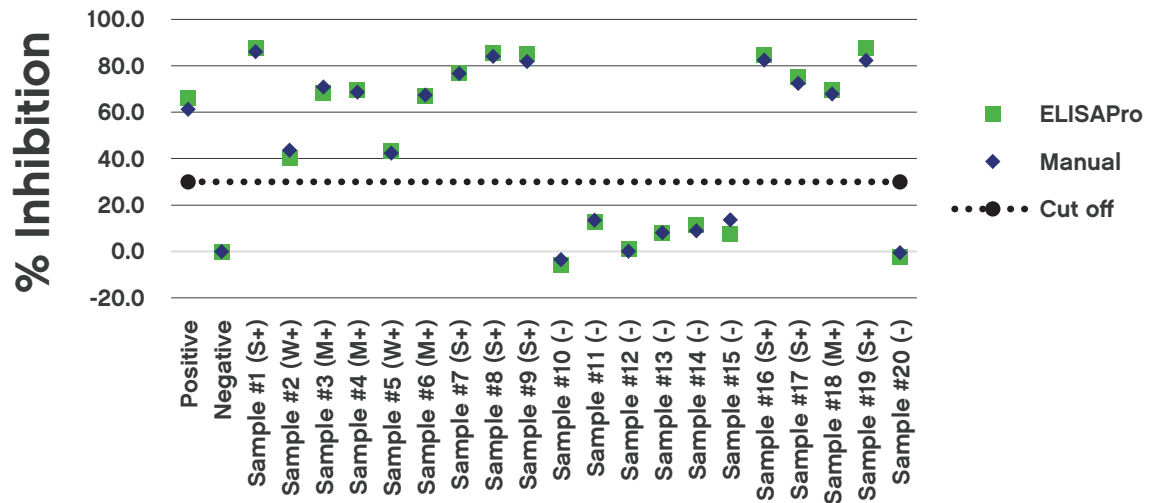
### Result:

|           | Well 1  | Well 40 | Well 88 |
|-----------|---------|---------|---------|
| Sample    | 1:00:09 | 1:00:05 | 1:00:06 |
| Conjugate | 0:20:09 | 0:20:05 | 0:20:06 |
| Substrate | 0:20:08 | 0:20:08 | 0:20:08 |

### ELISAPro vs Manual:

Compares the data from ELISAPro to data obtained manually from two technicians for confirmation of concordance using an internal, well-characterized sample set.

### Result:



### Cross-contamination:

Confirms there is no well-to-well cross-contamination due to carry-over of samples.

### Result:

The assay was negative for cross-contamination (data not shown).

### Conclusion:

In accordance with OIE standards, VMRD has demonstrated that the ELISAPro adequately performs VMRD's *Anaplasma* Antibody Test Kit, cELISA v2, and produces data that is equivalent to that obtained using traditional methods using a well-characterized panel of samples. Each sample and control met pre-determined criteria for both methods.