

**VMRD**

PO Box 502, Pullman, WA 99163 USA

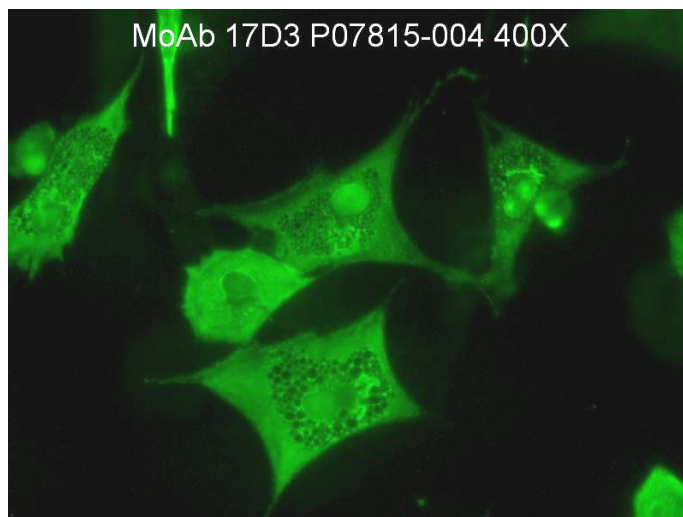
Telephone: + 1 (509) 334-5815

Fax: + 1 (509) 332-5356

E-mail: vmrd@vmrd.comWeb site: <http://www.vmrd.com>

Certificate of Analysis

Monoclonal Antibody

Cell Line: 17D3**Specificity:** Nucleocapsid (N) protein of Equine Arteritis Virus (EAV)**Isotype:** IgG₁**Lot:** P070815-004**Known Virus Reactivity:** Bucyrus strain.**Known Applications:** Indirect fluorescence assays (IFA), Western blot, competitive binding assays.**References:**

Deregt, D., *et al.* Monoclonal antibodies to equine arteritis virus proteins identify the G_L protein as a target for virus neutralization. *J. Gen. Virol.* 75(9):2439-2444 (Sept. 1994).

Description and Handling: This monoclonal antibody is produced as mouse ascites fluid, clarified by centrifugation, and filtered through a 0.2 µm filter. The concentration is 1.0 mg/ml in phosphate-buffered saline, containing 4 mg/ml BSA, and preserved with 10 ppm ProClin 300.**Storage:** When the vial is stored at 2-8°C, it should be stable for one year.**Quality Control Method (QC1415):** Indirect FA using EAV slide (Bucyrus strain) and rabbit anti-mouse IgG FITC conjugate (VMRD catalog no. 095-10).**Result:** 4+ positive fluorescence at 1:100 dilution in FA Conjugate Diluting Buffer (VMRD catalog no. 210-91-CB).**Other Reactions or Comments:** No background; 2+ fluorescence at 1:10,000 dilution.

FOR *IN VITRO* LABORATORY USE ONLY.

WARRANTY: VMRD, Inc. warrants that this product is as described in the quantity and contents stated on the label at the time of delivery to the customer. NO OTHER WARRANTIES, EXPRESS OR IMPLIED, ARE MADE BEYOND THE LABEL DESCRIPTION, INCLUDING WARRANTIES OF MERCHANTABILITY OR FITNESS FOR A PARTICULAR USE. Remedy is limited to replacement of the product or refund of the purchase price. VMRD, Inc. is not liable for property damage, personal injury, or economic loss caused by the product. The information listed in this information sheet is provided for reference only, and should not be substituted for the user's own incoming material quality control.