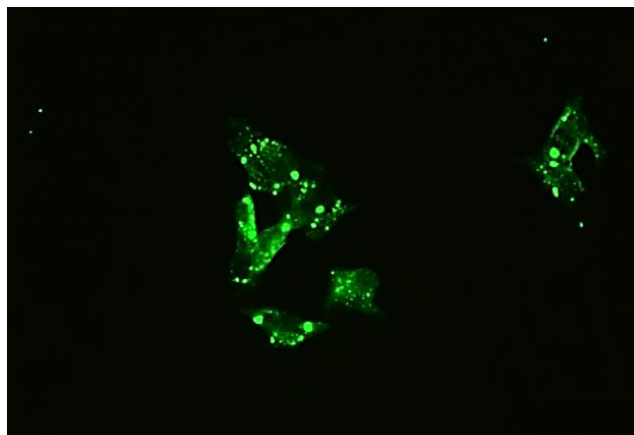


## CDV-NP Canine Distemper Virus (CDV)

Monoclonal Antibody (MAb)

Catalog No.:	CDV-NP
Specificity:	CDV
Epitope:	Unknown
Isotype:	IgG <sub>2b</sub> , kappa light chain
Species of Origin:	Murine
Volume:	Increments of 0.1 mg
Preservative:	0.09% Sodium Azide
Shelf Life:	1 year when stored at 2-7°C



### Description:

This monoclonal antibody reacts with Canine Distemper Virus Nucleoprotein (inclusions). It is produced as mouse ascites fluid, clarified by centrifugation, and filtered through a 0.2 µm filter. The antibody concentration is 1.0 mg/ml, in phosphate-buffered saline (PBS), stabilized with 4 mg/ml bovine serum albumin (BSA), and preserved with 0.09% sodium azide (NaN<sub>3</sub>).

### Known Applications:

Immunofluorescence, Western blot, immunohistochemistry, and ELISA. Immunofluorescence staining is cytoplasmic only (no nuclear staining) and is intense; inclusion bodies are stained most intensely. In Western blot using ultracentrifuge-precipitated CDV in reducing gels this MAb gives major bands at 76; 68; 54, and 32 kD. Immunohistochemistry is effective in paraffin embedded tissue to detect CDV.

### Storage:

This monoclonal antibody is provided in liquid form and should be stored at 2-7°C. DO NOT FREEZE!

### References:

- Stanton, J.B., et al. Retrospective differentiation of canine distemper virus and phocid distemper virus in phocids. J. Wildlife Dis. 40(1):53-59 (Jan. 2004).
- Stanton, J.B., et al. Immunohistochemical analysis of two strains of lion (*Panthera leo*)-adapted canine distemper virus in ferrets (*Mustela putorius furo*). Vet. Pathol. 40(4):464-467 (July 2003).

FOR *IN VITRO* LABORATORY USE ONLY.

H:\Master Documents\TDS\Monoclonals\CDV-NP TDS V1 CPM Active MKT.docx

16 March 2018

- Stanton, J.B., et al. Development of a semi-nested reverse transcription polymerase chain reaction assay for the retrospective diagnosis of canine distemper virus infection. J. Vet. Diagn. Invest. 14(1):47-52 (Jan. 2002).
- Ramos-Vara, J.A., et al. Optimization of immunohistochemical methods using two different antigen retrieval methods on formalin-fixed, paraffin-embedded tissues: Experience with 63 markers. J. Vet. Diagn. Invest. 12(4):307-311 (July 2000).
- Uchida, K., et al. Non-purulent meningoencephalomyelitis of a Pacific striped dolphin (*Lagenorhynchus obliquidens*). The first evidence of morbillivirus infection in a dolphin at the Pacific Ocean around Japan. J. Vet. Med. Sci. 61(2):159-162 (Feb. 1999).

**Technical Data Sheet Version:**

Version 1

FOR *IN VITRO* LABORATORY USE ONLY.

H:\Master Documents\TDS\Monoclonals\CDV-NP TDS V1 CPM Active MKT.docx

16 March 2018