

**VMRD**

PO Box 502, Pullman, WA 99163 USA

Telephone: + 1 (509) 334-5815

Fax: + 1 (509) 332-5356

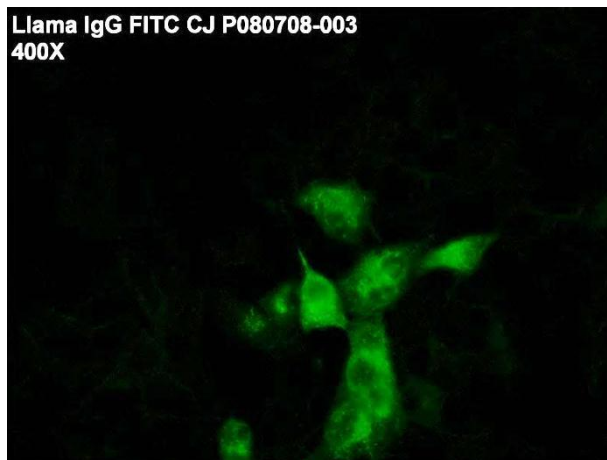
E-mail: [vmrd@vmrd.com](mailto:vmrd@vmrd.com)Web site: <http://www.vmrd.com>

## Certificate of Analysis

### **LLAMA IgG**

**FITC ANTI-IMMUNOGLOBULIN  
CONJUGATE****CATALOG NO.:** 066-10

re-order as CJ-F-CAMG-AP-10ML

**VOLUME:** 10 ml**LOT:** P080708-003**EXPIRATION DATE:** 06 November 2019**Llama IgG FITC CJ P080708-003  
400X**

**DESCRIPTION:** Anti-Llama IgG polyclonal antiserum conjugated to fluorescein isothiocyanate. Affinity purified. Reacts with heavy and light chains. Goat origin. Ready for use.

**QUALITY CONTROL METHOD:** IFA on VMRD, Inc. Equine Rhinopneumonitis Virus/Equine Herpesvirus Type 1 (ERV/EHV-1) 12-well slide (catalog no. SLD-IFA-ERV), and ERV Positive Control (catalog no. PC-IFA-ERV-LL).

**Specific Reaction:** 2-3+ signal and trace background with the positive control at neat, negative with the diluent control.

**STORAGE:** This conjugate is provided in liquid form and should be stored at 2-7°C. DO NOT FREEZE! If conjugate becomes cloudy it should be discarded. This conjugate contains 10 ppm ProClin 300 as a preservative.

FOR *IN VITRO* LABORATORY USE ONLY.

**WARRANTY:** VMRD, Inc. warrants that this product is as described in the quantity and contents stated on the label at the time of delivery to the customer. NO OTHER WARRANTIES, EXPRESS OR IMPLIED, ARE MADE BEYOND THE LABEL DESCRIPTION, INCLUDING WARRANTIES OF MERCHANTABILITY OR FITNESS FOR A PARTICULAR USE. Remedy is limited to replacement of the product or refund of the purchase price. VMRD, Inc. is not liable for property damage, personal injury, or economic loss caused by the product. The information listed in this information sheet is provided for reference only, and should not be substituted for the user's own incoming material quality control.