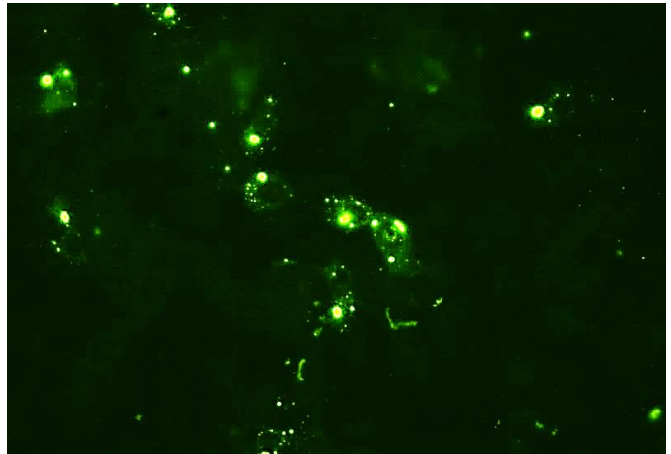


CPI-A-CA Canine Parainfluenza Virus Type 2 (CPI-2)

Monoclonal Antibody (MAb)

Catalog No.:	CPI-A-CA
Specificity:	CPI-2
Epitope:	Unknown
Isotype:	IgG ₁ , kappa light chain
Origin:	Cell Culture Supernatant
Volume:	Increments of 0.1 mg
Preservative:	0.09% Sodium Azide
Shelf Life:	1 year when stored at 2-7°C



Description:

This monoclonal antibody reacts with Canine Parainfluenza Virus Type 2 (CPI-2). Does not react with Canine Adenovirus Type 2 (CAV-2), Canine Coronavirus (CCV), Canine Distemper Virus (CDV), Canine Parvovirus (CPV), Feline Leukemia Virus (FeLV), Feline Immunodeficiency Virus (FIV), or Infectious Bovine Rhinotracheitis (IBR/BHV-1). Purified on an isotype-specific affinity column from cell culture supernatant derived from a hybridoma subcloned from CPI-1-31A1. The antibody concentration is 1.0 mg/ml, in phosphate-buffered saline (PBS), stabilized with 4 mg/ml bovine serum albumin (BSA), and preserved with 0.09% sodium azide (NaN₃).

Known Applications:

Immunofluorescence and ELISA.

Storage:

This monoclonal antibody is provided in liquid form and should be stored at 2-7°C. DO NOT FREEZE!

References:

NA

Technical Data Sheet Version:

Version 1

FOR *IN VITRO* LABORATORY USE ONLY.

H:\Master Documents\TDS\Monoclonals\CPI-A-CA TDS V1 CPM Active MKT.docx

25 September 2014