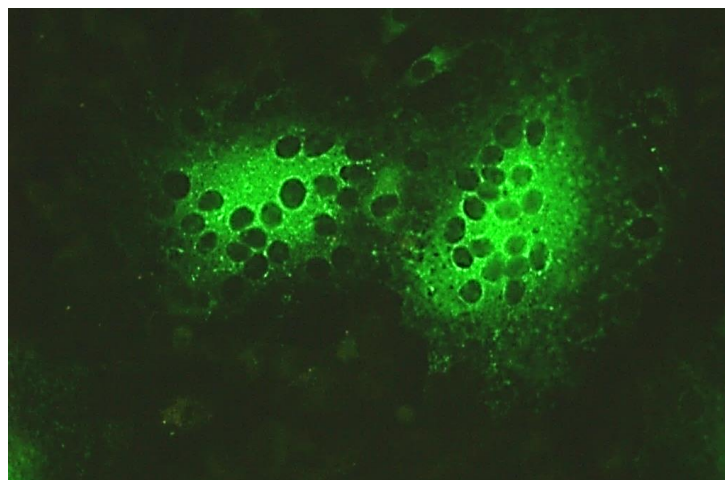


Feline Infectious Peritonitis Virus Type 2 (FIP-2)

FA Substrate Slide

Catalog No.:	SLD-IFA-FIP2
Size:	12 Well
Shelf Life:	4 Years from date of qualification
Well Capacity:	50 µl
Substrate:	Crandell Feline Kidney (CrFK) TENN cells infected with Feline Infectious Peritonitis Type 2 (FIP- 2), strain Type II / Haber



Description:

Slides are virus-infected cell cultures grown on the surface of Teflon-masked slides. They are supplied fixed and unstained in moisture-free foil pouches. All wells contain both positive and negative cells. The positive cells usually total no more than 30% of the cells in the well so that good contrast may be seen.

Intended Use:

Generally used for Indirect FA to detect antibody to FIP-2 but may also be used as a positive and negative control substrate slide for direct FA conjugates when applicable. May be used to differentiate antibody class (IgG or IgM) with suitable quality fluoresceinated second antibody conjugate.

Interpretation of Results:

It is recommended that any diagnostic interpretation be validated for the particular laboratory and sample population against samples of known disposition and/or a suitable reference assay. For cats expressing clinical signs consistent with FIP, we recommend testing sera at a screening dilution of 1/6400. Screening of healthy cats should be at 1/400. For the 1/6400 screening dilution, we recommend using a single-step dilution of 1 µ of test serum in 6.4 ml of PBS for the most consistent interlaboratory results. Making serial dilutions of this magnitude may compound errors of various kinds. Endpoint titers may be determined from four-fold dilutions of the 1/6400 or 1/400 screening dilutions. Sera diluted in PBS should be assayed within 1 hour of making the dilution.

Storage:

Store sealed in foil pouch at <-10°C. Avoid self-defrosting freezers.

References:

NA

Technical Data Sheet Version:

Version 2

Recommended Staining Procedure for Indirect FA:

1. Warm slide to room temperature before removing from foil pouch.
2. Place diluted serum on the designated wells. Dilute serum in serum diluting buffer, pH 7.2 (catalog no. FASDB-100ML) however if high background due to anti-bovine IgG activity is present it may be advisable to use SSDB-100ML.
3. Incubate slide in humid chamber at 37°C for 30 minutes.
4. Using a wash bottle, gently rinse slide briefly in FA rinse buffer, pH 9.0 (catalog no. FARB-4X) and then soak for 10 minutes in FA rinse buffer, pH 9.0.
5. Drain slide and dry around wells by pressing blotter (included in pouch) to front surface. Place labeled anti-IgG or IgM on the wells.
6. Incubate as in step 3.
7. Rinse as in step 4.
8. Drain slide and dry back and edges with a paper towel. Do not allow stained surface to dry. Do not rinse with water.
9. Mount with mounting fluid [glycerol/FA rinse buffer, pH 9.0, (50/50)] (catalog no. FAMF-10ML) and view with good quality fluorescence microscope at 100X-250X. Confirmation may be made at 400X.

Recommended Staining Procedure for Direct FA:

1. Warm slide to room temperature before removing from foil pouch.
2. Place of direct FA conjugate on the designated wells.
3. Incubate slide in humid chamber at 37°C for 30 minutes.
4. Using a wash bottle, gently rinse slide briefly in FA rinse buffer, pH 9.0 (catalog no. FARB-4X) and then soak for 10 minutes in FA rinse buffer, pH 9.0.
5. Drain slide and dry back and edges with a paper towel. Do not allow stained surface to dry. Do not rinse with water.
6. Mount with mounting fluid [glycerol/FA rinse buffer, pH 9.0, (50/50)] (catalog no. FAMF-10ML) and view with good quality fluorescence microscope at 100X-250X. Confirmation may be at 400X.

Serum Diluting Buffer (pH 7.2):*

- Na₂HPO₄.....1.19 gm
- NaH₂PO₄.....0.22 gm
- NaCl.....8.55 gm
- BSA.....10.0 gm
- DI/dH₂O.....Q.S. to 1 liter

*This recipe makes 1 liter. If you need less, adjust recipe accordingly. Store at 2-7°C. Add 0.09% NaN₃ if diluted serum is not going to be used within one week.

4X FA Rinse Buffer (pH 9.0):

- Na₂CO₃.....11.4 gm
- NaHCO₃.....33.6 gm
- NaCl.....8.5 gm
- DI/dH₂O.....Q.S. to 1 liter

Final pH should be 9.0-9.5. This is a 4X concentrate and should be diluted 1/4 with DI/distilled water for use as a working buffer. Keep in a tightly stoppered container at room temperature. MOUNTING FLUID is made by mixing glycerol and FA rinse buffer, pH 9.0, in equal proportions.