



VMRD

PO Box 502, Pullman, WA 99163 USA

Telephone: 509-334-5815

Fax: 509-332-5356

E-mail: vmrd@vmrd.com

Web site: <http://www.vmrd.com>

Certificate of Analysis

FELINE PANLEUKOPENIA VIRUS (FPLV)

FA Control Slide

CATALOG NO.: SLD-FAC-FPL

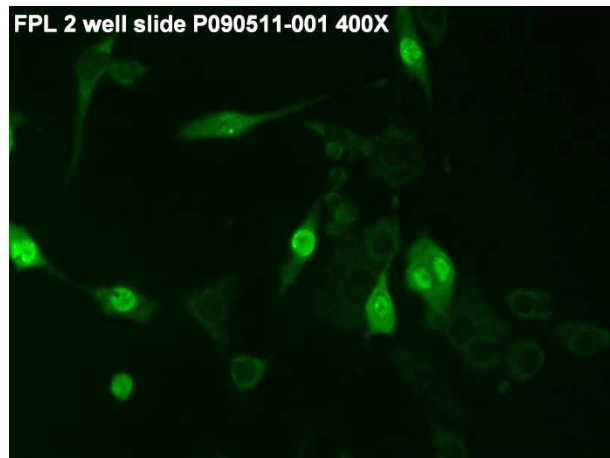
SIZE: 2 Well

LOT: P090511-001

EXPIRATION: 08 January 2017

AGENT: Feline Panleukopenia Virus

STRAIN: Andrea



CELL CULTURE Crandell Feline Kidney Cells (CrFK)

SUBSTRATE:

DESCRIPTION: Slides are Feline Panleukopenia Virus-infected cell cultures grown on the surface of Teflon-masked slides. They are supplied fixed and unstained in moisture-free foil pouches. Each slide contains one positive and one negative cell culture well. The positive well contains both positive and negative cells. The positive cells usually total no more than 30% of the cells in the well so that good contrast may be seen.

QUALITY CONTROL METHOD: Direct FA using VMRD, Inc. FPL FITC CJ (catalog no. CJ-F-FPL-MAB-1ML or 10ML).

Specific Reaction: 3-4+ fluorescence with trace background on the positive well and negative with trace background on the negative well. 5-25 infected cells per high powered field.

Other Comments: NA

PATTERN OF FLUORESCENCE: Single cells with cytoplasmic and/or nuclear fluorescence.

INTENDED USE: For positive and negative control of direct or indirect FA tests for Feline Panleukopenia Virus.

STORAGE: Store sealed in foil pouch at -20°C. Avoid self-defrosting freezers.

REFERENCES: NA

FOR *IN VITRO* LABORATORY USE ONLY.

WARRANTY: VMRD, Inc. warrants that this product is as described in the quantity and contents stated on the label at the time of delivery to the customer. NO OTHER WARRANTIES, EXPRESS OR IMPLIED, ARE MADE BEYOND THE LABEL DESCRIPTION, INCLUDING WARRANTIES OF MERCHANTABILITY OR FITNESS FOR A PARTICULAR USE. Remedy is limited to replacement of the product or refund of the purchase price. VMRD, Inc. is not liable for property damage, personal injury, or economic loss caused by the product. The information listed in this information sheet is provided for reference only, and should not be substituted for the user's own incoming material quality control.

H:\Quality VMRD\QC\CofA\2-well Slides\FPL\SLD-FAC-FPL P090511-001 170108.docx
21 January 2013

RECOMMENDED STAINING PROCEDURE FOR INDIRECT FA:

1. Warm slide to room temperature before removing from foil pouch.
2. Place diluted serum on the designated wells. Dilute serum in serum diluting buffer, pH 7.2 (catalog no. 210-93-SB).
3. Incubate slide in humid chamber at 37°C for 30 minutes.
4. Using a wash bottle, gently rinse slide briefly in FA rinse buffer, pH 9.0 (catalog no. 210-90-RB) and then soak for 10 minutes in FA rinse buffer, pH 9.0.
5. Drain slide and dry around wells by pressing blotter (included in pouch) to front surface. Place labeled anti-IgG or IgM on the wells.
6. Incubate as in step 3.
7. Rinse as in step 4.
8. Drain slide and dry back and edges with a paper towel. Do not allow stained surface to dry. Do not rinse with water.
9. Mount with mounting fluid [glycerol/FA rinse buffer, pH 9.0, (50/50)] (catalog no. 210-92-MF) and view with good quality fluorescence microscope at 100X-250X. Confirmation may be made at 400X.

RECOMMENDED STAINING PROCEDURE FOR DIRECT FA:

1. Warm slide to room temperature before removing from foil pouch.
2. Place direct FA conjugate on the designated wells.
3. Incubate slide in humid chamber at 37°C for 30 minutes.
4. Using a wash bottle, gently rinse slide briefly in FA rinse buffer, pH 9.0 (catalog no. 210-90-RB) and then soak for 10 minutes in FA rinse buffer, pH 9.0.
5. Drain slide and dry back and edges with a paper towel. Do not allow stained surface to dry. Do not rinse with water.
6. Mount with mounting fluid [glycerol/FA rinse buffer, pH 9.0, (50/50)] (catalog no. 210-92-MF) and view with good quality fluorescence microscope at 100X-250X. Confirmation may be at 400X.

SERUM DILUTING BUFFER (pH 7.2):*

- Na₂HPO₄ 1.19 gm
- NaH₂PO₄ 0.22 gm
- NaCl 8.55 gm
- BSA 10.0 gm
- DI/dH₂O Q.S. to 1 liter

* This recipe makes 1 liter. If you need less, adjust recipe accordingly. Store at 2-7°C. Add 0.09% NaN₃ if diluted serum is not going to be used within one week.

4X FA RINSE BUFFER (pH 9.0):

- Na₂CO₃ 11.4 gm
- NaHCO₃ 33.6 gm
- NaCl 8.5 gm
- DI/dH₂O Q.S. to 1 liter

Final pH should be 9.0-9.5. This is a 4X concentrate and should be diluted 1/4 with DI/distilled water for use as a working buffer. Keep in a tightly stoppered container at room temperature. MOUNTING FLUID is made by mixing glycerol and FA rinse buffer, pH 9.0, in equal proportions.