



**VMRD**

PO Box 502, Pullman, WA 99163 USA

Telephone: + 1 (509) 334-5815

Fax: + 1 (509) 332-5356

E-mail: [vmrd@vmrd.com](mailto:vmrd@vmrd.com)

Web site: <http://www.vmrd.com>

## Certificate of Analysis

### **CANINE IgG**

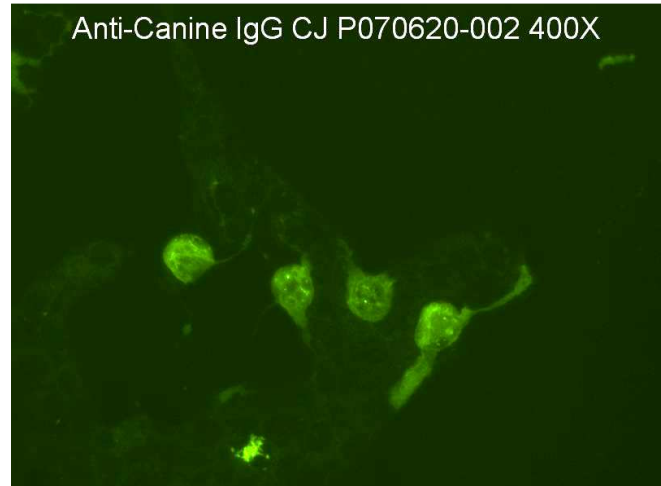
#### **FITC ANTI-IMMUNOGLOBULIN CONJUGATE**

**CATALOG NO.:** 035-10

**VOLUME:** 10 ml

**LOT:** P070620-002

**EXPIRATION DATE:** 2 July 2009



**DESCRIPTION:** Anti-Canine IgG polyclonal antiserum conjugated to fluorescein isothiocyanate. Caprine origin. Ready for use.

**QUALITY CONTROL METHOD:** IFA using VMRD, Inc. Canine Adenovirus FA Substrate Slides (catalog no. SLD-IFA-CAV), CAV IgG Positive Control (catalog no. 211-P-CAV).

**Specific Reaction:** 1-3+ on CAV IgG.

**Other Reactions or Comments:** Endpoint of positive control with conjugate is at 1:8. **Note:** Because goats commonly have antibodies to *Toxoplasma*, this goat-origin conjugate may bind directly to VMRD's *Toxoplasma gondii* substrate, catalog no. SLD-IFA-TOXO, making a negative serum appear positive; use catalog no. 035-AP-10 (rabbit-origin affinity purified conjugate) instead.

**STORAGE:** This conjugate is provided in liquid form and should be stored at 4-8°C. **DO NOT FREEZE!** If conjugate becomes cloudy it should be discarded. This conjugate contains 10 ppm ProClin 300 as a preservative.

FOR *IN VITRO* LABORATORY USE ONLY.

**WARRANTY:** VMRD, Inc. warrants that this product is as described in the quantity and contents stated on the label at the time of delivery to the customer. NO OTHER WARRANTIES, EXPRESS OR IMPLIED, ARE MADE BEYOND THE LABEL DESCRIPTION, INCLUDING WARRANTIES OF MERCHANTABILITY OR FITNESS FOR A PARTICULAR USE. Remedy is limited to replacement of the product or refund of the purchase price. VMRD, Inc. is not liable for property damage, personal injury, or economic loss caused by the product. The information listed in this information sheet is provided for reference only, and should not be substituted for the user's own incoming material quality control.