



**VMRD, Inc.**

PO Box 502, Pullman, WA 99163 USA

Telephone: + 1 (509) 334-5815

Fax: + 1 (509) 332-5356

E-mail: [vmrd@vmrd.com](mailto:vmrd@vmrd.com)

Web site: <http://www.vmrd.com>

## Certificate of Analysis

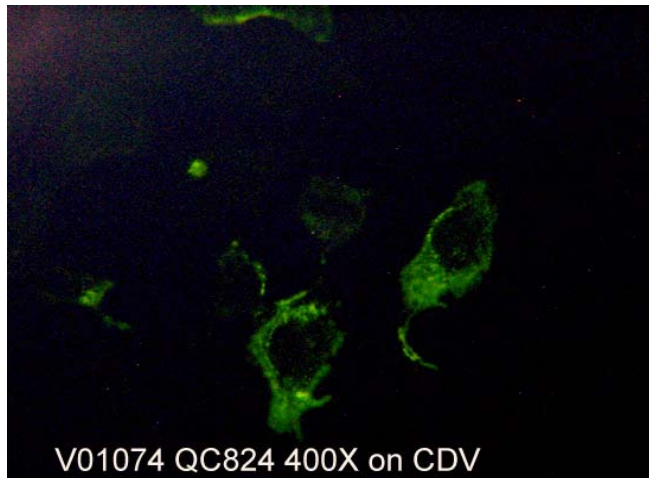
### **CANINE IgM** **FITC ANTI-IMMUNOGLOBULIN** **CONJUGATE**

**CATALOG NO.:** 036-1

**VOLUME:** 1 ml

**LOT:** V01074-121606

**EXPIRATION:** 16 December 2006



**DESCRIPTION:** Anti-Canine IgM polyclonal antiserum conjugated to fluorescein isothiocyanate. Heavy chain specific. Affinity Purified. Caprine origin. Ready for use.

**QUALITY CONTROL METHOD:** Indirect FA using VMRD Canine Parvovirus (CPV) FA Substrate Slide (catalog no. 210-88-10-CPV) to detect binding of canine anti-CPV IgM, CPV IgM Positive Control (catalog no. 211-P-CPV-M); Canine Distemper Virus (CDV) Substrate Slides (catalog no. 210-88-10-CDV) to detect binding of canine anti-CDV IgM, CDV IgM Positive Control (catalog no. 211-P-CDV-M).

**Specific Reaction:** 3-4+ positive fluorescence CPV Positive Control, 2-3+ on CDV Positive Control, (-) on negative cells.

**Other Reactions or Comments:** No background.

FOR IN VITRO LABORATORY USE ONLY.

**WARRANTY:** VMRD, Inc. warrants that this product is as described in the quantity and contents stated on the label at the time of delivery to the customer. NO OTHER WARRANTIES, EXPRESS OR IMPLIED, ARE MADE BEYOND THE LABEL DESCRIPTION, INCLUDING WARRANTIES OF MERCHANTABILITY OR FITNESS FOR A PARTICULAR USE. Remedy is limited to replacement of the product or refund of the purchase price. VMRD, Inc. is not liable for property damage, personal injury, or economic loss caused by the product. The information listed in this information sheet is provided for reference only, and should not be substituted for the user's own incoming material quality control.