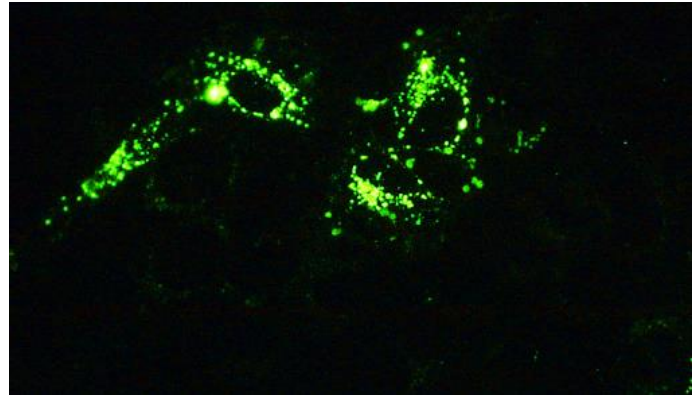


## Anti-Porcine IgG (H&L)

FITC Conjugate Affinity Purified

Catalog No.:	CJ-F-PORG-AP-1ML or 10ML
Shelf Life:	4 years from date of qualification
Volume:	1 or 10 ml
Preservative:	0.09% Sodium Azide
Species of Origin:	Caprine



### Description:

Porcine IgG polyclonal antiserum conjugated to fluorescein isothiocyanate (FITC). Heavy and light chain specific. Affinity purified. Ready to use. Liquid.

### Intended Use:

Immunoglobulin conjugate on porcine systems.

### Storage:

This conjugate is provided in liquid form and should be stored at 2-7°C. DO NOT FREEZE! It should also be stored in the original container and/or in the dark (even after dilution). If conjugate becomes cloudy it should be discarded.

### References:

NA

### Technical Data Sheet Version:

Version 1

#### Recommended Staining Procedure for Indirect FA:

1. Warm slide to room temperature before removing from foil pouch.
2. Place diluted serum on the designated wells. Dilute serum in serum diluting buffer, pH 7.2 (catalog no. FASDB-100ML) however if high background due to anti-bovine IgG activity is present it may be advisable to use SSDB-100ML.
3. Incubate slide in humid chamber at 37°C for 30 minutes.
4. Using a wash bottle, gently rinse slide briefly in FA rinse buffer, pH 9.0 (catalog no. FARB-4X) and then soak for 10 minutes in FA rinse buffer, pH 9.0.
5. Drain slide and dry around wells by pressing blotter (included in pouch) to front surface. Place labeled anti-IgG or IgM on the wells.
6. Incubate as in step 3.
7. Rinse as in step 4.
8. Drain slide and dry back and edges with a paper towel. Do not allow stained surface to dry. Do not rinse with water.
9. Mount with mounting fluid [glycerol/FA rinse buffer, pH 9.0, (50/50)] (catalog no. FAMF-10ML) and view with good quality fluorescence microscope at 100X-250X. Confirmation may be made at 400X.

Note: Microscopic precipitates may appear in this product and it is recommended that a short high speed centrifugation (approximately 10,000xg for 3 min) be performed to clarify it.

#### Recommended Staining Procedure for Direct FA:

1. Warm slide to room temperature before removing from foil pouch.
2. Place of direct FA conjugate on the designated wells.
3. Incubate slide in humid chamber at 37°C for 30 minutes.
4. Using a wash bottle, gently rinse slide briefly in FA rinse buffer, pH 9.0 (catalog no. FARB-4X) and then soak for 10 minutes in FA rinse buffer, pH 9.0.
5. Drain slide and dry back and edges with a paper towel. Do not allow stained surface to dry. Do not rinse with water.
6. Mount with mounting fluid [glycerol/FA rinse buffer, pH 9.0, (50/50)] (catalog no. FAMF-10ML) and view with good quality fluorescence microscope at 100X-250X. Confirmation may be at 400X.

#### Serum Diluting Buffer (pH 7.2):\*

- Na<sub>2</sub>HPO<sub>4</sub>.....1.19 gm
- NaH<sub>2</sub>PO<sub>4</sub>.....0.22 gm
- NaCl.....8.55 gm
- BSA.....10.0 gm
- DI/dH<sub>2</sub>O.....Q.S. to 1 liter

\*This recipe makes 1 liter. If you need less, adjust recipe accordingly. Store at 2-7°C. Add 0.09% NaN<sub>3</sub> if diluted serum is not going to be used within one week.

#### 4X FA Rinse Buffer (pH 9.0):

- Na<sub>2</sub>CO<sub>3</sub>.....11.4 gm
- NaHCO<sub>3</sub>.....33.6 gm
- NaCl.....8.5 gm
- DI/dH<sub>2</sub>O.....Q.S. to 1 liter

Final pH should be 9.0-9.5. This is a 4X concentrate and should be diluted 1/4 with DI/distilled water for use as a working buffer. Keep in a tightly stoppered container at room temperature. MOUNTING FLUID is made by mixing glycerol and FA rinse buffer, pH 9.0, in equal proportions.

FOR *IN VITRO* LABORATORY USE ONLY.