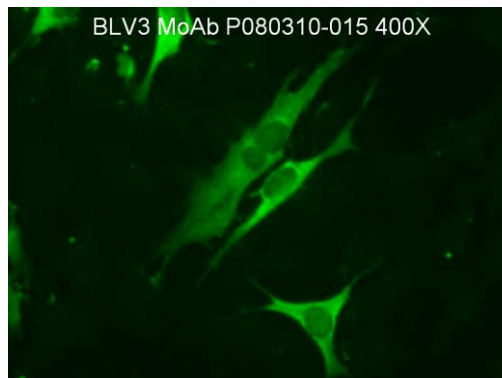


CERTIFICATE OF ANALYSIS

BLV3

Monoclonal Antibody

<b>Catalog No. / Cell Line:</b>	BLV3 (MW3)
<b>Lot:</b>	P080310-015
<b>Isotype:</b>	IgG <sub>1</sub>



**Specificity:**

Recognizes a linear epitope on BLV p24

**Known Applications:**

Radioimmunoprecipitation, Western blot, antigen capture, ELISA, immunoaffinity chromatography.

**Description:**

This monoclonal antibody is produced as mouse ascites fluid, clarified by centrifugation, and filtered through a 0.2 µm filter. The antibody concentration is 1.0 mg/ml, in phosphate-buffered saline, stabilized with 4 mg/ml bovine serum albumin (BSA) and preserved with 10 ppm ProClin 300.

**Quality Control Method:**

Indirect FA using BLV IFA substrate slide (VMRD catalog no. SLD-IFA-BLV), anti-mouse IgG FITC conjugate (VMRD catalog no. CJ-F-MURG-AP-1ML or 10ML).

**Specific Reaction:** 3-4+ positive at 1:10 in FA Conjugate Diluting Buffer (VMRD catalog no. FACDB-100ML).  
Endpoint at 1:10,000.

**Other Comments:** NA

**Pattern of Fluorescence:**

Diffuse cytoplasmic and membrane fluorescence on individual cells, plaques of cells, and occasional syncytia.

**Storage:**

When the vial is stored at 2-8°C, it should be stable for one year.

**References:**

Basu I, et al. Antiviral Activity of Shiga Toxin Requires Enzymatic Activity and Is Associated with Increased Permeability of the Target Cells. *Infect Immun*. 2003 January; 71(1): 327-334.

FOR IN VITRO LABORATORY USE ONLY.

H:\Quality VMRD\QC\CofA\Monoclonals\BLV3\BLV3 P080310-015.docx

8 June 2010