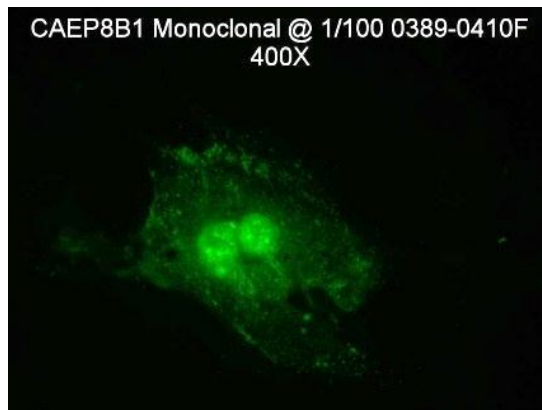


**CERTIFICATE OF ANALYSIS**

CAEP8B1

Monoclonal Antibody

<b>Catalog No. / Cell Line:</b>	CAEP8B1
<b>Lot:</b>	0389-0410F
<b>Isotype:</b>	IgG <sub>1</sub>



**Specificity:**

Caprine Arthritis Encephalitis Virus (CAEV)

**Known Applications:**

Immunoprecipitation and immunofluorescence.

**Description:**

This monoclonal antibody is produced as mouse ascites fluid, clarified by centrifugation, and filtered through a 0.22 µm filter. The antibody concentration is approximately 1.0 mg/ml, in phosphate-buffered saline (PBS), and preserved with 0.09% sodium azide (NaN<sub>3</sub>).

**Quality Control Method:**

IFA using CAEV In House 12-well slide, Isotype Control (1.0 mg/ml) IgG<sub>1</sub>, and Anti-Mouse IgG FITC Conjugate (catalog no. CJ-F-MURG-AP-10ML).

**Specific Reaction:** 1-4+ fluorescence with no background at 10 µg/ml and an endpoint concentration of Trace to 1+ at 1 µg/ml. The RID test determined 1.29 mg/ml of IgG<sub>1</sub>.

**Other Comments:** NA

**Pattern of Fluorescence:**

Dusty and particulate cytoplasmic fluorescence of multinucleated and single cells, and strong particulate nuclear fluorescence.

**Storage:**

When the vial is stored at 2-7°C, it should be stable for one year.

**References:**

McGuire, T.C., *et al.* Antigenic and structural variation of the p28 core polypeptide of goat and sheep retroviruses. *J. Gen. Virol.* 68(8):2259-2263 (Aug. 1987).

Cell Line	Ig Isotype	p28 Capsid Protein Reactivity				Control
		CAEV-63	CAEV-Co	VV*	OPPV*	
CAEP5A1	IgG <sub>1</sub>	+	+	+	+	-
CAEP10A1	IgG <sub>1</sub>	+	+	+	-	-
CAEP8B1	IgG <sub>1</sub>	+	+	+	-	-
CAEP13B1	IgG <sub>1</sub>	+	+	-	-	-
CAEP12A1	IgG <sub>1</sub>	+	-	-	-	-

\*VV = Visna Virus; OPPV = Ovine Progressive Pneumonia Virus.

**FOR IN VITRO LABORATORY USE ONLY.**