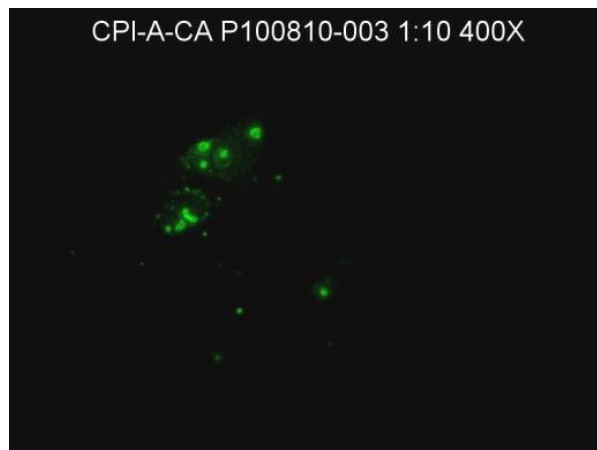


**CERTIFICATE OF ANALYSIS**

CPI-A-CA

Monoclonal Antibody

<b>Catalog No. / Cell Line:</b>	CPI-A-CA*
<b>Lot:</b>	P100810-003
<b>Isotype:</b>	IgG <sub>2b</sub> , kappa light chain



\* This lot was prepared from subclone CPI-1-31A1

**Specificity:**

Canine Parainfluenza Virus (Type 2). Does not react with Canine Adenovirus Type 2 (CAV-2), Canine Coronavirus (CCV), Canine Distemper Virus (CDV), Canine Parvovirus (CPV), Feline Leukemia Virus (FeLV), or Feline Immunodeficiency Virus (FIV), and Infectious Bovine Rhinotracheitis (IBR/BHV-1).

**Known Applications:**

Immunofluorescence and ELISA.

**Description:**

Purified on protein A from hybridoma cell culture supernatant. The antibody concentration is 1.0 mg/ml, in phosphate-buffered saline (PBS), stabilized with 4 mg/ml bovine serum albumin (BSA), and preserved with 0.09% sodium azide (NaN<sub>3</sub>).

**Quality Control Method:**

Indirect FA using VMRD CPI/PI-2 12-well slide (catalog no. SLD-IFA-CPI), Isotype Control IgG<sub>2b</sub>, and Anti-Mouse IgG FITC Conjugate (catalog no. CJ-F-MURG-AP-1ML or CJ-F-MURG-AP-10ML).

**Specific Reaction:** 3-4+ fluorescence at 10 µg/ml with an endpoint concentration less than 0.1 µg/ml and no background and the isotype control was negative.

**Other Comments:** NA

**Pattern of Fluorescence:**

Rough, fibrous and speckled cytoplasmic and undifferentiated nuclear fluorescence in syncytia and single cells.

**Storage:**

When the vial is stored at 2-7°C, it should be stable for one year.

**References:**

No specific reference at this time.

**FOR IN VITRO LABORATORY USE ONLY.**