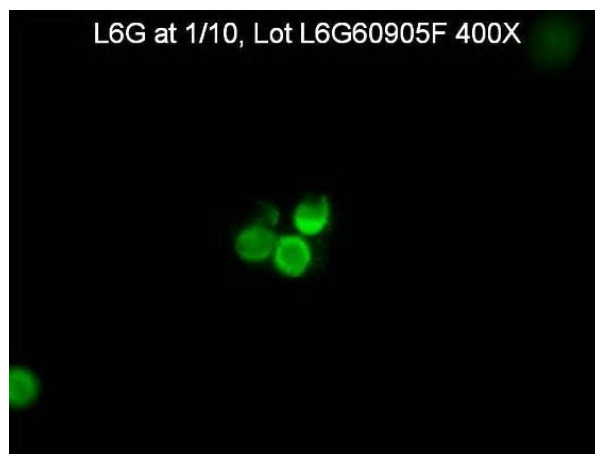


CERTIFICATE OF ANALYSIS

L6G

Monoclonal Antibody

Catalog No. / Cell Line:	L6G
Lot:	L6G60905F
Isotype:	IgM



**Specificity:**

Bovine Herpesvirus Type 5; specific for the gC viral protein. Does not react with BHV-1 (at 100µg/ml by IFA), BHV-3 or BHV-4.

**Known Applications:**

Indirect immunofluorescence, ELISA, Western blot, and immunoprecipitation assays.

**Description:**

This monoclonal antibody is produced as mouse ascites fluid, clarified by centrifugation, and filtered through a 0.2 µm filter. The antibody concentration is 1.0 mg/ml, in phosphate-buffered saline (PBS) and preserved with 0.09% sodium azide (NaN<sub>3</sub>).

**Quality Control Method:**

Indirect FA using VMRD, Inc. BHV-5 (In House slide), Isotype Control IgM (catalog no. 4A4-2 (1.0 mg/ml)), and Anti-Mouse IgM FITC Conjugate (catalog no. CJ-F-MURG-AP-10ML). The concentration was tested in RID with a mouse Immunoglobulins kit IgM.

**Specific Reaction:** 1-3+ fluorescence at a concentration of 10 µl/ml with no background and an endpoint titer less than 1.0 µl/ml. Isotype control was negative. RID results showed a concentration of 1.76 mg/ml.

**Other Comments:** NA

**Pattern of Fluorescence:**

Individual cells with smooth and undifferentiated membrane fluorescence.

**Storage:**

When the vial is stored at 2-7°C, it should be stable for one year.

**References:**

C.-S. Chung, *et al.* Monoclonal antibodies that distinguish between encephalitogenic bovine herpesvirus type 1.3 and respiratory bovine herpesvirus Type 1.1. *Clin. Diag. Lab. Immun.* 1(1):83-88 (Jan. 1994).

FOR IN VITRO LABORATORY USE ONLY.