



**VMRD**

PO Box 502, Pullman, WA 99163 USA

Telephone: 509-334-5815  
Fax: 509-332-5356  
E-mail: [vmrd@vmrd.com](mailto:vmrd@vmrd.com)  
Web site: <http://www.vmrd.com>

## Certificate of Analysis

### **ANAPLASMA PHAGOCYTOPHILA**

*Positive Control Serum*

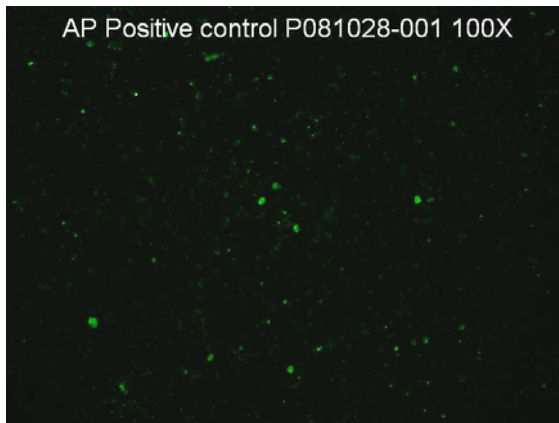
**CATALOG NO.:** 211-P-EE  
re-order as PC-IFA-AP

**VOLUME:** 1 ml

**LOT:** P081028-001

**EXPIRATION:** 15 June 2012

**AGENT:** *Anaplasma phagocytophila*



**QUALITY CONTROL METHOD:** Indirect FA using *Anaplasma phagocytophila* 12 well slide (catalog no. SLD-IFA-AP), *Anaplasma phagocytophila* Negative Control (catalog no. NC-IFA-AP), Anti-Equine IgG FITC Conjugate (catalog no. CJ-F-EQUG-1ML or CJ-F-EQUG-10ML).

**Specific Reaction:** 4+fluorescence at neat with an endpoint titer at 1:16.

**Other Comment:** NA

**PATTERN OF FLUORESCENCE:** Brightly fluorescent cytoplasmic inclusion bodies (morulae), clustered elementary bodies (initial bodies), and free elementary bodies, approximately 0.3 microns in diameter. High titer test sera will fluoresce brighter than this positive control serum.

**INTENDED USE:** As control serum in detection of antibody to *Anaplasma phagocytophila* by indirect FA technique. This serum should be used undiluted to demonstrate positive fluorescence.

**STABILITY:** Store at 2-7°C. DO NOT FREEZE!

**DESCRIPTION:** Equine serum diluted in PBS, 10% DBS, 10 ppm ProClin 300.

FOR *IN VITRO* LABORATORY USE ONLY.

**WARRANTY:** VMRD, Inc. warrants that this product is as described in the quantity and contents stated on the label at the time of delivery to the customer. NO OTHER WARRANTIES, EXPRESS OR IMPLIED, ARE MADE BEYOND THE LABEL DESCRIPTION, INCLUDING WARRANTIES OF MERCHANTABILITY OR FITNESS FOR A PARTICULAR USE. Remedy is limited to replacement of the product or refund of the purchase price. VMRD, Inc. is not liable for property damage, personal injury, or economic loss caused by the product. The information listed in this information sheet is provided for reference only, and should not be substituted for the user's own incoming material quality control.