



**VMRD**

PO Box 502, Pullman, WA 99163 USA

Telephone: + 1 (509) 334-5815

Fax: + 1 (509) 332-5356

E-mail: [vmrd@vmrd.com](mailto:vmrd@vmrd.com)

Web site: <http://www.vmrd.com>

## Certificate of Analysis

### **CANINE DISTEMPER VIRUS (CDV) IgM Positive Control Serum**

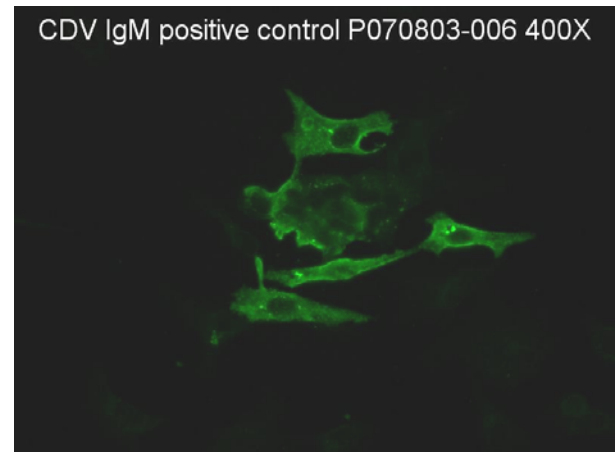
**CATALOG NO.:** 211-P-CDV-M

**VOLUME:** 1 ml

**LOT:** P070803-006

**EXPIRATION:** 16 July 2011

**VIRUS:** Canine Distemper Virus (CDV)



**DESCRIPTION:** Canine serum diluted in PBS, 10% bovine serum, 0.09% sodium azide.

**INTENDED USE:** As control serum in detection of IgM heavy-chain specific antibody to Canine Distemper Virus (CDV) by indirect FA technique. This serum should be used undiluted to demonstrate positive fluorescence.

**QUALITY CONTROL METHOD:** Indirect FA using VMRD, Inc. CDV Substrate Slides (catalog no. SLD-IFA-CDV); Anti-Canine IgM FITC Conjugate (catalog no. 036-1 or 036-10).

**Specific Reaction:** 3+ positive fluorescence at neat; endpoint at 1:4 with no background.

**Other Reactions or Comments:** NA

**PATTERN OF FLUORESCENCE:** Individual cells with inclusion bodies and plasma membrane fluorescence. High titer test sera will fluoresce brighter than this positive control serum.

**STORAGE:** Store at 4-8°C. DO NOT FREEZE!

FOR *IN VITRO* LABORATORY USE ONLY.

**WARRANTY:** VMRD, Inc. warrants that this product is as described in the quantity and contents stated on the label at the time of delivery to the customer. NO OTHER WARRANTIES, EXPRESS OR IMPLIED, ARE MADE BEYOND THE LABEL DESCRIPTION, INCLUDING WARRANTIES OF MERCHANTABILITY OR FITNESS FOR A PARTICULAR USE. Remedy is limited to replacement of the product or refund of the purchase price. VMRD, Inc. is not liable for property damage, personal injury, or economic loss caused by the product. The information listed in this information sheet is provided for reference only, and should not be substituted for the user's own incoming material quality control.