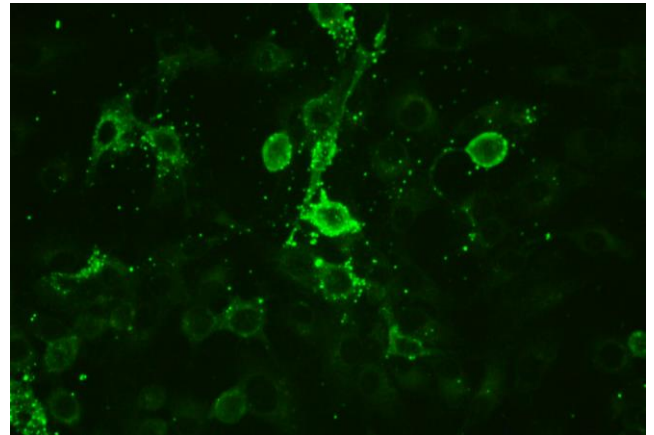


Canine Parvovirus (CPV) IgM

FA Positive Control

Catalog No.:	PC-IFA-CPV-M
Shelf Life:	4 years from date of qualification
Volume:	1 ml
Immunogen:	Canine Parvovirus (CPV)
Preservative:	0.09% Sodium Azide
Species of Origin:	Canine



Description:

Canine serum diluted in PBS, 10% DBS, and 0.09% sodium azide as a preservative.

Intended Use:

As a positive control serum in detection of IgM antibody to CPV by indirect FA technique. This serum should be used undiluted to demonstrate positive fluorescence.

Storage:

Store at 2-7°C. DO NOT FREEZE! If control becomes cloudy it should be discarded.

References:

NA

Technical Data Sheet Version:

Version 1

Recommended Staining Procedure for Indirect FA:

1. Warm slide to room temperature before removing from foil pouch.
2. Place diluted serum on the designated wells. Dilute serum in serum diluting buffer, pH 7.2 (catalog no. FASDB-100ML) however if high background due to anti-bovine IgG activity is present it may be advisable to use SSDB-100ML.
3. Incubate slide in humid chamber at 37°C for 30 minutes.
4. Using a wash bottle, gently rinse slide briefly in FA rinse buffer, pH 9.0 (catalog no. FARB-4X) and then soak for 10 minutes in FA rinse buffer, pH 9.0.
5. Drain slide and dry around wells by pressing blotter (included in pouch) to front surface. Place labeled anti-IgG or IgM on the wells.
6. Incubate as in step 3.
7. Rinse as in step 4.
8. Drain slide and dry back and edges with a paper towel. Do not allow stained surface to dry. Do not rinse with water.
9. Mount with mounting fluid [glycerol/FA rinse buffer, pH 9.0, (50/50)] (catalog no. FAMF-10ML) and view with good quality fluorescence microscope at 100X-250X. Confirmation may be made at 400X.

Recommended Staining Procedure for Direct FA:

1. Warm slide to room temperature before removing from foil pouch.
2. Place of direct FA conjugate on the designated wells.
3. Incubate slide in humid chamber at 37°C for 30 minutes.
4. Using a wash bottle, gently rinse slide briefly in FA rinse buffer, pH 9.0 (catalog no. FARB-4X) and then soak for 10 minutes in FA rinse buffer, pH 9.0.
5. Drain slide and dry back and edges with a paper towel. Do not allow stained surface to dry. Do not rinse with water.
6. Mount with mounting fluid [glycerol/FA rinse buffer, pH 9.0, (50/50)] (catalog no. FAMF-10ML) and view with good quality fluorescence microscope at 100X-250X. Confirmation may be at 400X.

Serum Diluting Buffer (pH 7.2):*

- Na₂HPO₄.....1.19 gm
- NaH₂PO₄.....0.22 gm
- NaCl.....8.55 gm
- BSA.....10.0 gm
- DI/dH₂O.....Q.S. to 1 liter

*This recipe makes 1 liter. If you need less, adjust recipe accordingly. Store at 2-7°C. Add 0.09% NaN₃ if diluted serum is not going to be used within one week.

4X FA Rinse Buffer (pH 9.0):

- Na₂CO₃.....11.4 gm
- NaHCO₃.....33.6 gm
- NaCl.....8.5 gm
- DI/dH₂O.....Q.S. to 1 liter

Final pH should be 9.0-9.5. This is a 4X concentrate and should be diluted 1/4 with DI/distilled water for use as a working buffer. Keep in a tightly stoppered container at room temperature. MOUNTING FLUID is made by mixing glycerol and FA rinse buffer, pH 9.0, in equal proportions.