



VMRD, Inc.

PO Box 502, Pullman, WA 99163 USA

Telephone: + 1 (509) 334-5815

Fax: + 1 (509) 332-5356

E-mail: vtech@vmrd.com

Web site: <http://www.vmrd.com>

Certificate of Analysis

**EQUINE RHINOPNEUMONITIS
VIRUS/EQUINE HERPESVIRUS
TYPE 1 (ERV/EHV-1)**

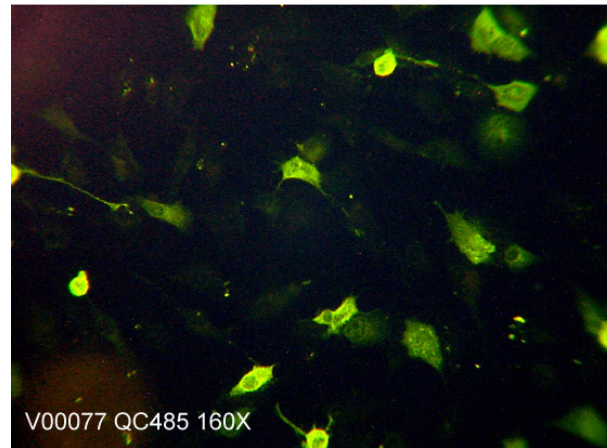
*Positive Control Serum
Equine Origin*

CATALOG NO.: 211-P-ERV-EQ

VOLUME: 1 ml

LOT: V00077-020605

EXPIRATION: 6 February 2005



VIRUS: Equine Rhinopneumonitis Virus/Equine Herpesvirus Type 1 (ERV/EHV-1)

QUALITY CONTROL METHOD: Indirect FA using VMRD, Inc. ERV FA Substrate Slides (catalog no. 210-88-10-ERV); Anti-Equine IgG FITC Conjugate (catalog no. 043-10).

Specific Reaction: 3-4+ positive fluorescence on positive cells, negative on negative cells.

Other Reactions or Comments: Endpoint at 1:16 with 1+ signal. Trace background at neat.

PATTERN OF FLUORESCENCE: Variable-sized particulate cytoplasmic and smooth membrane fluorescence. High titer test sera will fluoresce brighter than this positive control serum.

INTENDED USE: As control serum in detection of antibody to Equine Rhinopneumonitis Virus/Equine Herpesvirus Type 1 (ERV/EHV-1) by indirect FA technique. This serum should be used undiluted to demonstrate positive fluorescence.

STORAGE: Store at 4-8°C. DO NOT FREEZE!

DESCRIPTION: Equine serum diluted in PBS, 1% BSA, 0.09% sodium azide.

FOR RESEARCH AND INVESTIGATIONAL USE ONLY.

WARRANTY: VMRD, Inc. warrants that this product is as described in the quantity and contents stated on the label at the time of delivery to the customer. NO OTHER WARRANTIES, EXPRESS OR IMPLIED, ARE MADE BEYOND THE LABEL DESCRIPTION, INCLUDING WARRANTIES OF MERCHANTABILITY OR FITNESS FOR A PARTICULAR USE. Remedy is limited to replacement of the product or refund of the purchase price. VMRD, Inc. is not liable for property damage, personal injury, or economic loss caused by the product. The information listed in this information sheet is provided for reference only, and should not be substituted for the user's own incoming material quality control.